

Varsity Medical Center



SITE DATA

LOCATION

Intersection of Robinwood Drive & Professional Drive

ACCESSIBILITY:

Easy access from US-40 and I-70

TRAFFIC COUNTS:

Traffic exposure of over 25,000 cars per day on Robinwood Drive.

SITE EXPOSURE:

Site is part of the Rosewood Village with over 250 existing residential units. Site is located next to Merritus Medical Center and Merritus Regional Hospital. Over 2,500 daily visits and 3,000 full time and part time employees. Hagerstown Community College with over 14,000 students and 500 full time employees.

DEMOGRAPHICS:

Total Population: 60,161 (15 Mile)
148,355 (County)
Average Age: 37
Total # of Households: 25,658 (15 Mile)
60,014 (County)
Mean Household Income: \$55,904

"Fastest Growing Area In Town"

WASHCO Management
Dion Akins
301-573-0148
dakins@washcomanagment.net

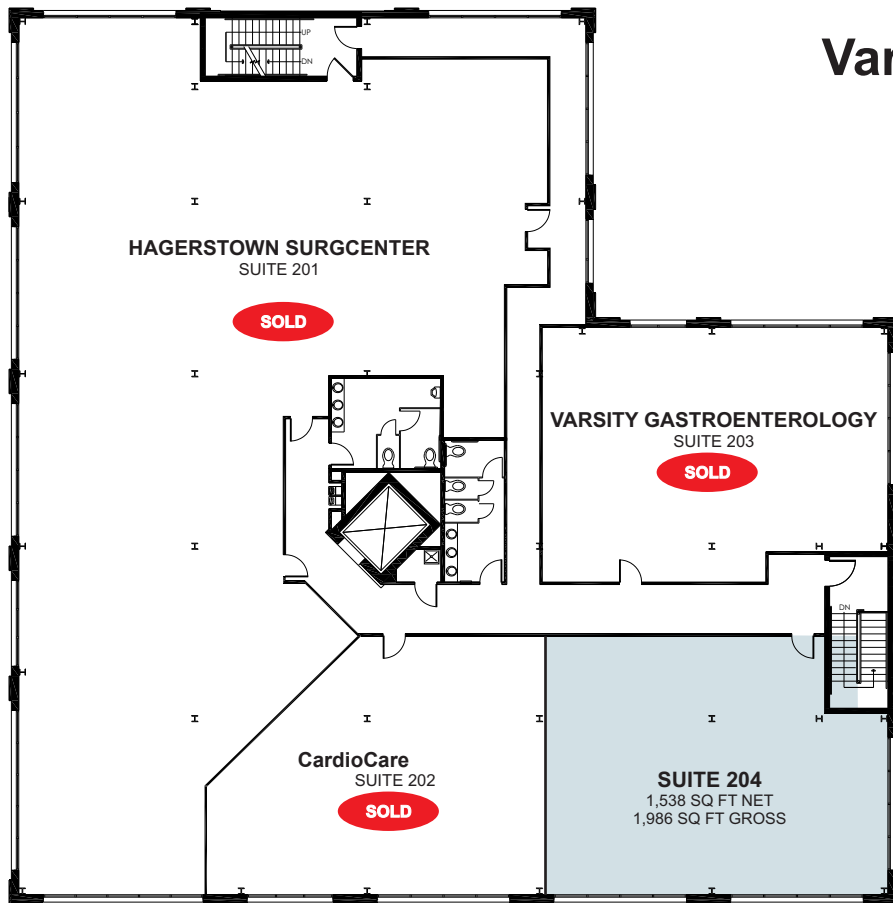
Washco
COMPANIES

Sassan Shaool
Washco Companies
301.573.5375 Cell
sshool@washcodevelopments.com

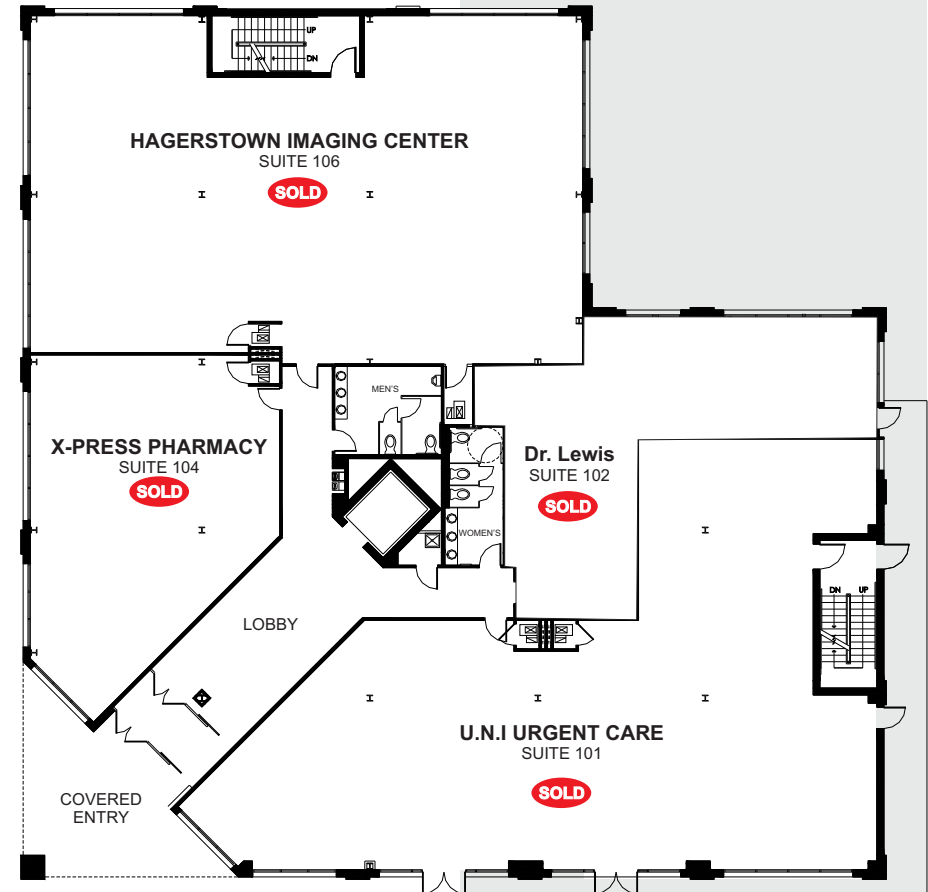
Varsity Medical Center

BUILDING FEATURES

- All Masonry Building
- Hospital Grade Elevator
- Attractive Lobby & Hallways
- Upscale Public Bathroom Facilities in Hallways
- 98 Parking Spaces
- Professional Exterior Signage



SECOND FLOOR PLAN



FIRST FLOOR PLAN



BUILDING EXTERIOR



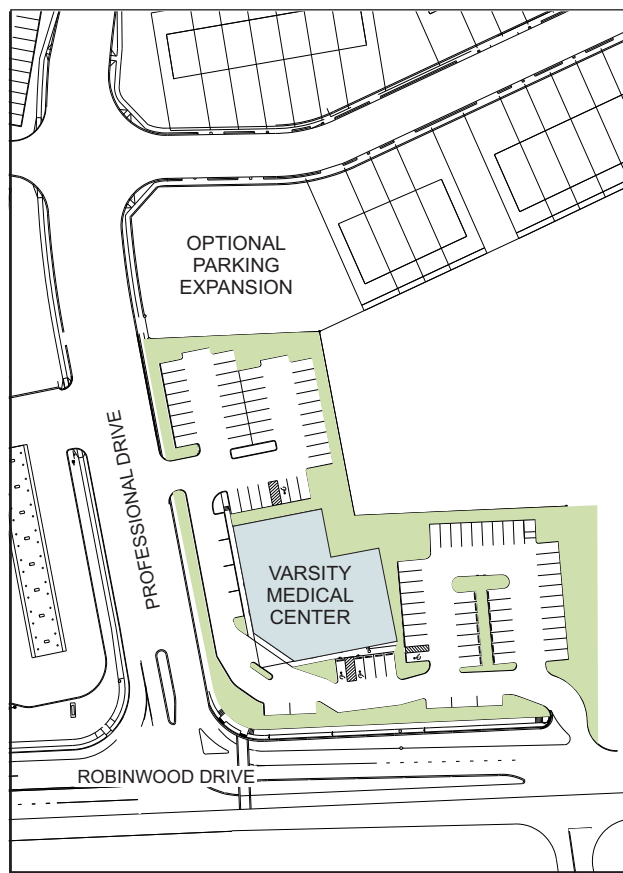
LOBBY

WASHCO Management
Dion Akins
301-573-0148
dakins@washcomanagment.net

Washco
COMPANIES

Sassan Shaool
Washco Companies
301.573.5375 Cell
sshaoool@washcodevelopments.com

Varsity Medical Center



SITE PLAN

BUILDING FEATURES

- All Masonry Building
- Hospital Grade Elevator
- Attractive Lobby & Hallways
- Upscale Public Bathroom Facilities in Hallways
- 98 Parking Spaces
- Professional Exterior Signage

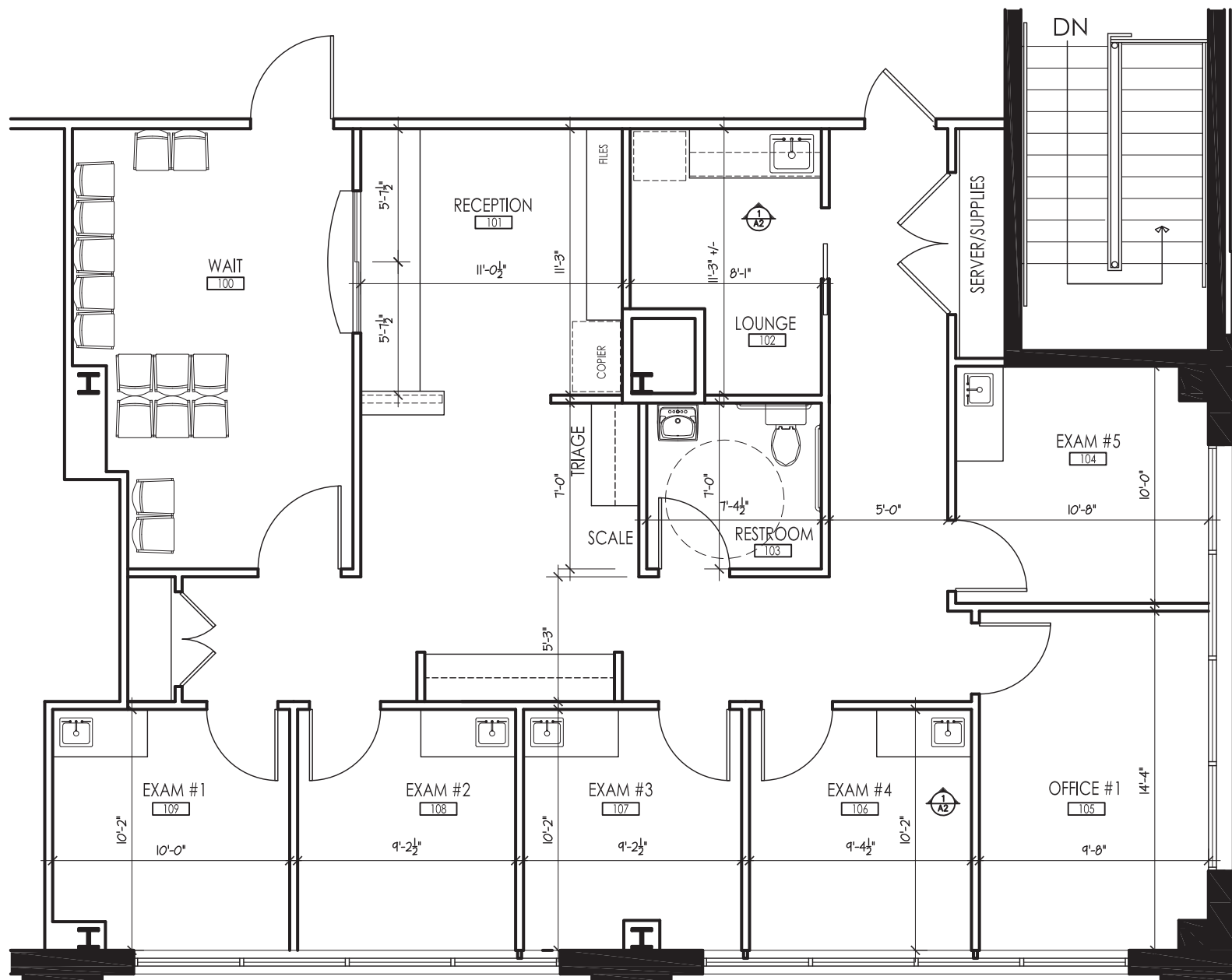
DEMOGRAPHICS

Regional Labor Supply	Population	Labor force	Employed	Unemployed	Percentage
Alleghany County	72,532	36,152	32,684	3,468	9.6
Washington County	145,910	67,633	60,610	7,023	10.4
Frederick County	227,980	142,714	114,792	7,922	6.5

WASHCO Management
Dion Akins
301-573-0148
dakins@washcomanagment.net

Washco
COMPANIES

Sassan Shaool
Washco Companies
301.573.5375 Cell
sshool@washcodevelopments.com



VARSITY PROFESSIONAL CENTER - SUITE 204

WASHCO Management
Dion Akins
301-573-0148
dakins@washcomanagment.net

Washco
COMPANIES

Sassan Shaool
Washco Companies
301.573.5375 Cell
sshool@washcodevelopments.com